

FLEX SPACE FOR SUBLEASE

2776 W 14000 S
Bluffdale, UT



PRESIDIO
COMMERCIAL REAL ESTATE

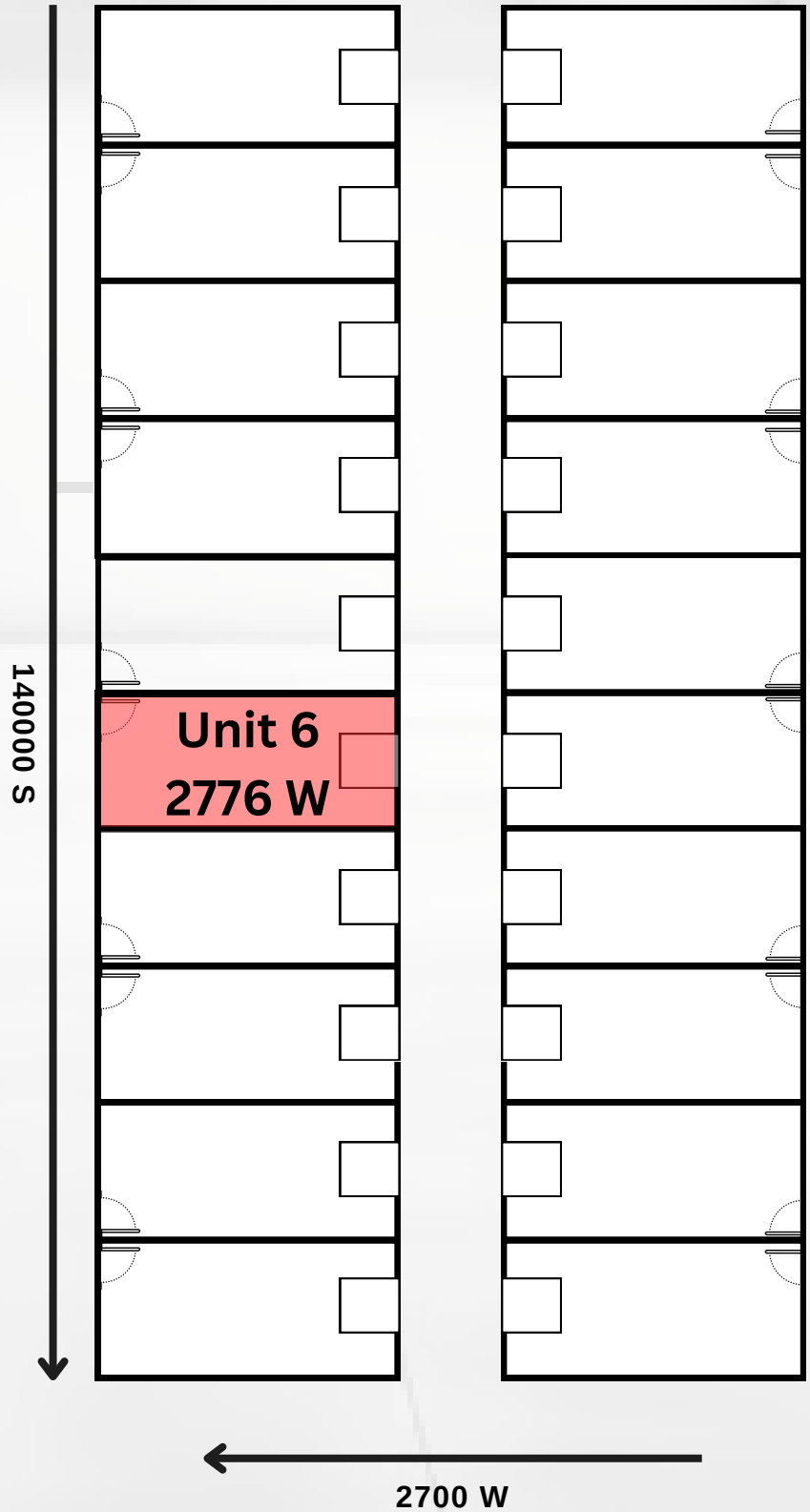
RETAIL/OFFICE/FLEX

SITE INFORMATION



Sublease

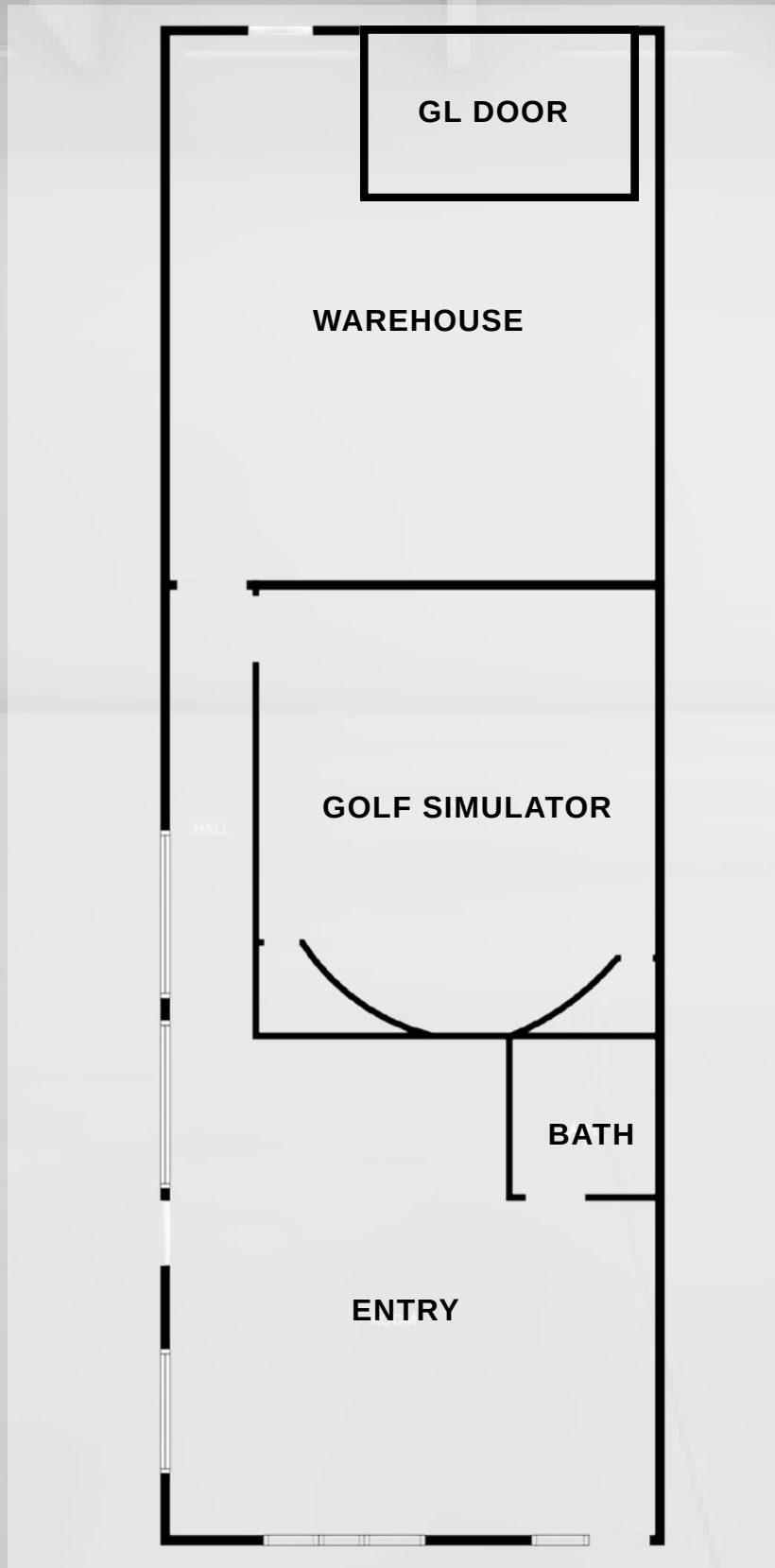
- 1,960 SF
- 50% More parking than similar projects. Automobile only parking areas in front of the building.
- Separate truck traffic access to overhead doors through corridor.
- 12x12 Insulated overhead door
- 208 Volt 125 amp 3 phase power
- C-3 Zone (General commercial)
- 19' 10" Clear height
- \$3,765/mo modified gross
- Master lease expiration 1/31/2029
- Current tenant using space as Virtual Golf Club.
- Space available Immediately upon lease execution.



2776 W 14000 S BLUFFDALE, UT



FLOOR PLAN



SITE LOCATION



Wardle Park 

OUR Contact

Get in touch with Us!

Blake McDougal



+1 801-898-5411



bmcdougal@presidio-commercial.com



www.presidioteam.com



3400 Ashton Blvd, Suite 275
Lehi, UT 84043