

# WAREHOUSE FOR SUBLEASE

255 W Central Ave,  
Millcreek, Utah 84107



## PROPERTY HIGHLIGHTS

- 11,570 SF
  - Warehouse - 7,400 Sf
  - Office - 4,170 SF
- Heated and Cooled Warehouse
- 1 Dock High Door
- 2 GL Doors
- Security System In Place
- Refreshed Office
- 3-Phase Power
- Available Immediately
- Master Lease Expiration - 4/30/2028
- Contact Agent for Pricing



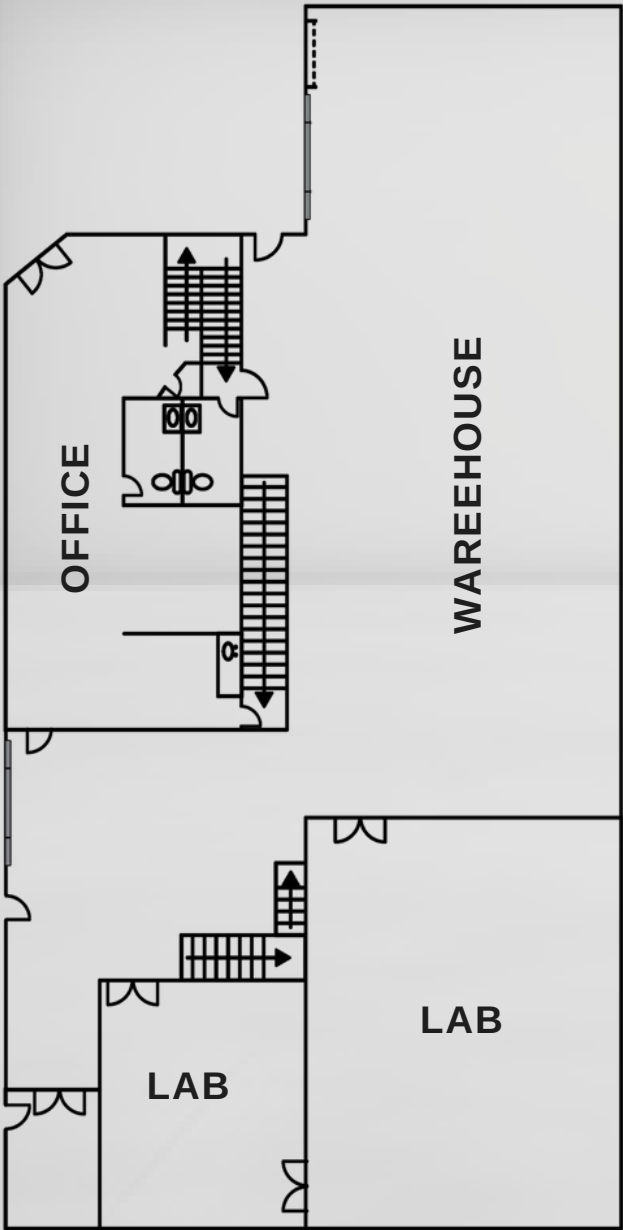
**PRESIDIO**  
COMMERCIAL REAL ESTATE

INDUSTRIAL FOR SUBLEASE

# FLOOR PLAN

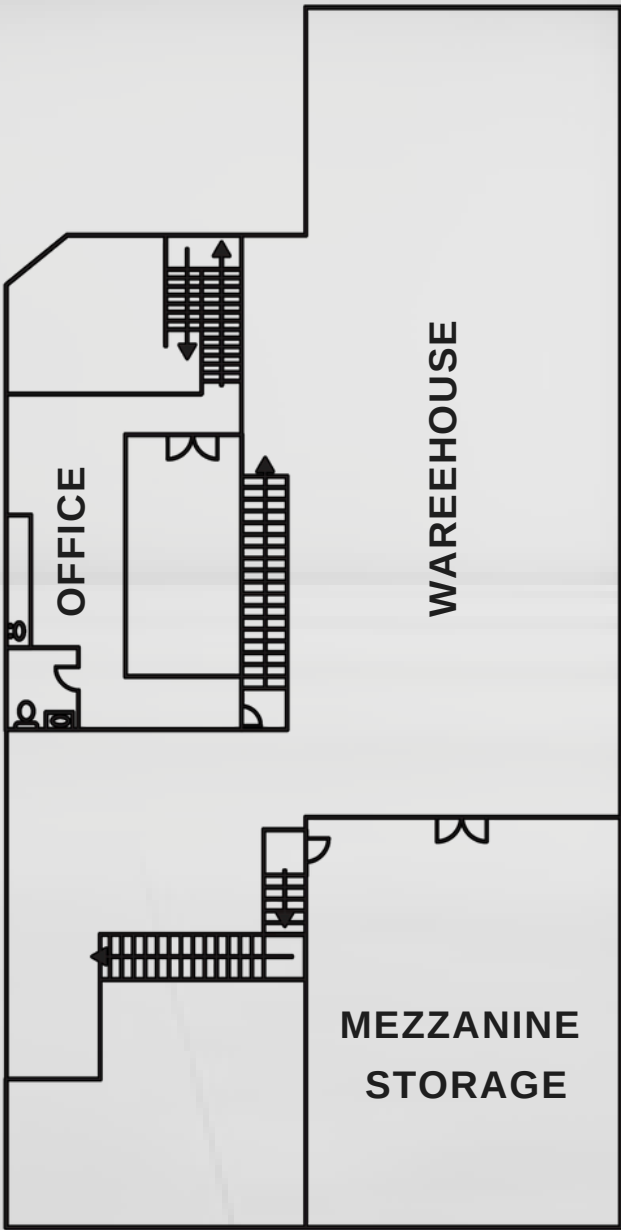


MAIN FLOOR



WAREHOUSE	7,400 SF
OFFICE	4,170 SF
TOTAL	11,570 SF

SECOND FLOOR



MEZZANINE STORAGE NOT INCLUDED IN SF CALCULATIONS

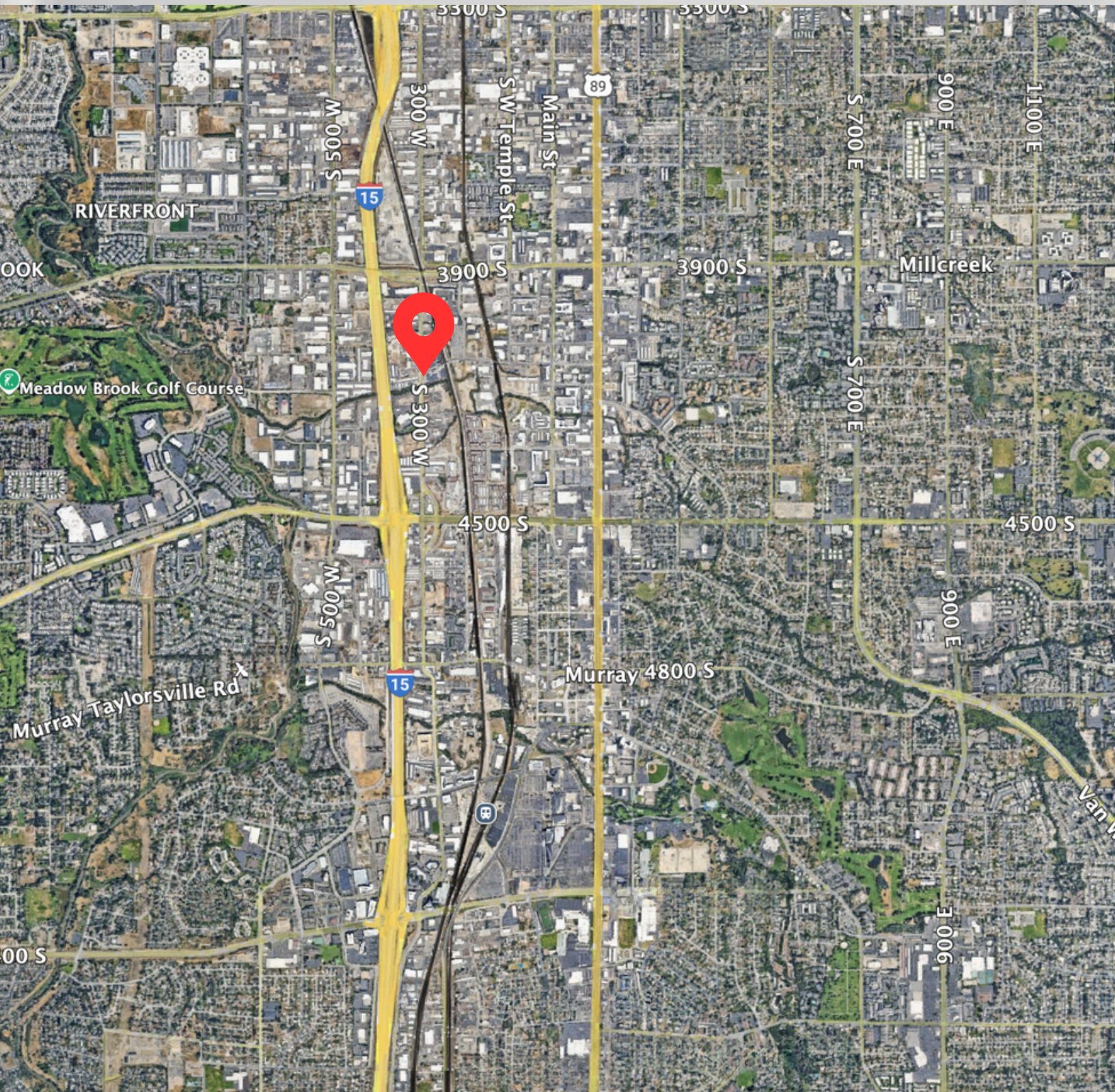


# 255 W CENTRAL AVE, MILLCREEK, UTAH 84107





# SITE LOCATION







# OUR Contact

*Get in touch with Us!*

Blake McDougal



+1 801-898-5411



[bmcDougal@presidio-commercial.com](mailto:bmcDougal@presidio-commercial.com)



[www.presidio-commercial.com](http://www.presidio-commercial.com)



3400 N ASHTON BLVD,  
SUITE 275  
LEHI, UT 84043

This document has been prepared by Presidio Real Estate for advertising and general information only. Presidio Real Estate makes no guarantees, representations or warranties of any kind, expressed or implied, regarding the information including, but not limited to, warranties of content, accuracy and reliability. Any interested party should undertake their own inquiries as to the accuracy of the information. Presidio Real Estate excludes unequivocally all inferred or implied terms, conditions and warranties arising out of this document and excludes all liability for loss and damages arising there from. This publication is the copyrighted property of Presidio Real Estate and/or its licensor(s).