

WAREHOUSE FOR LEASE

4892 S Commerce
Drive, Unit 8,
Murray, UT



PRESIDIO
COMMERCIAL REAL ESTATE

INDUSTRIAL FOR LEASE

SITE INFORMATION

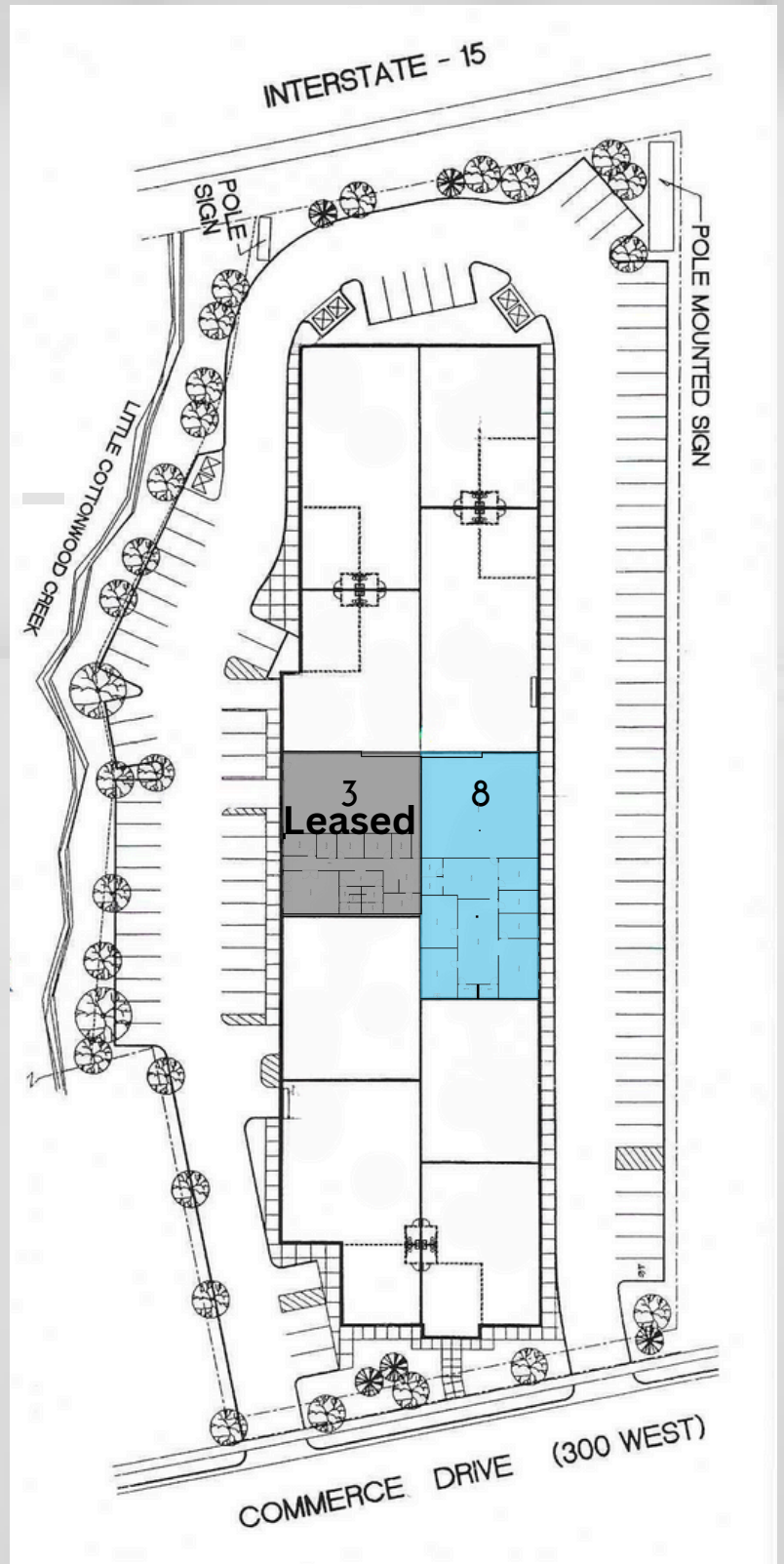


UNIT 8

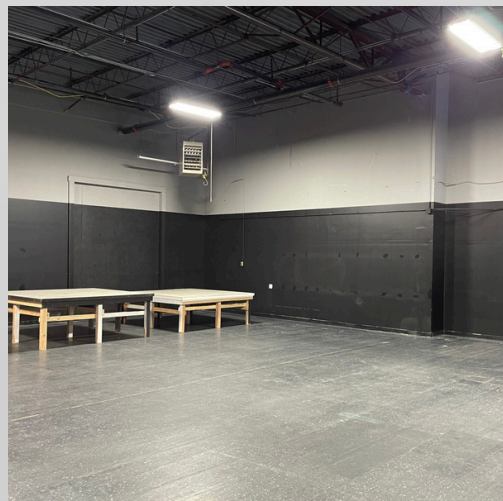
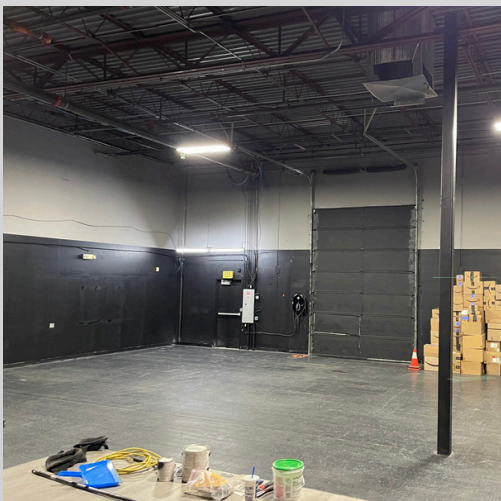
- 5,000 SF Total
 - 2,200 SF Warehouse
 - 2,800 SF Office
- Warehouse heated and cooled
- 14'-18' Clear Height
- 200 amp 3 phase power
- 10x14 GL Door
- 2.5:1000 Parking
- Fire Suppression
- New office in Unit 3, TI available for Unit 8
- \$1.05 NNN

Office can be removed unit to increase warehouse square footage.

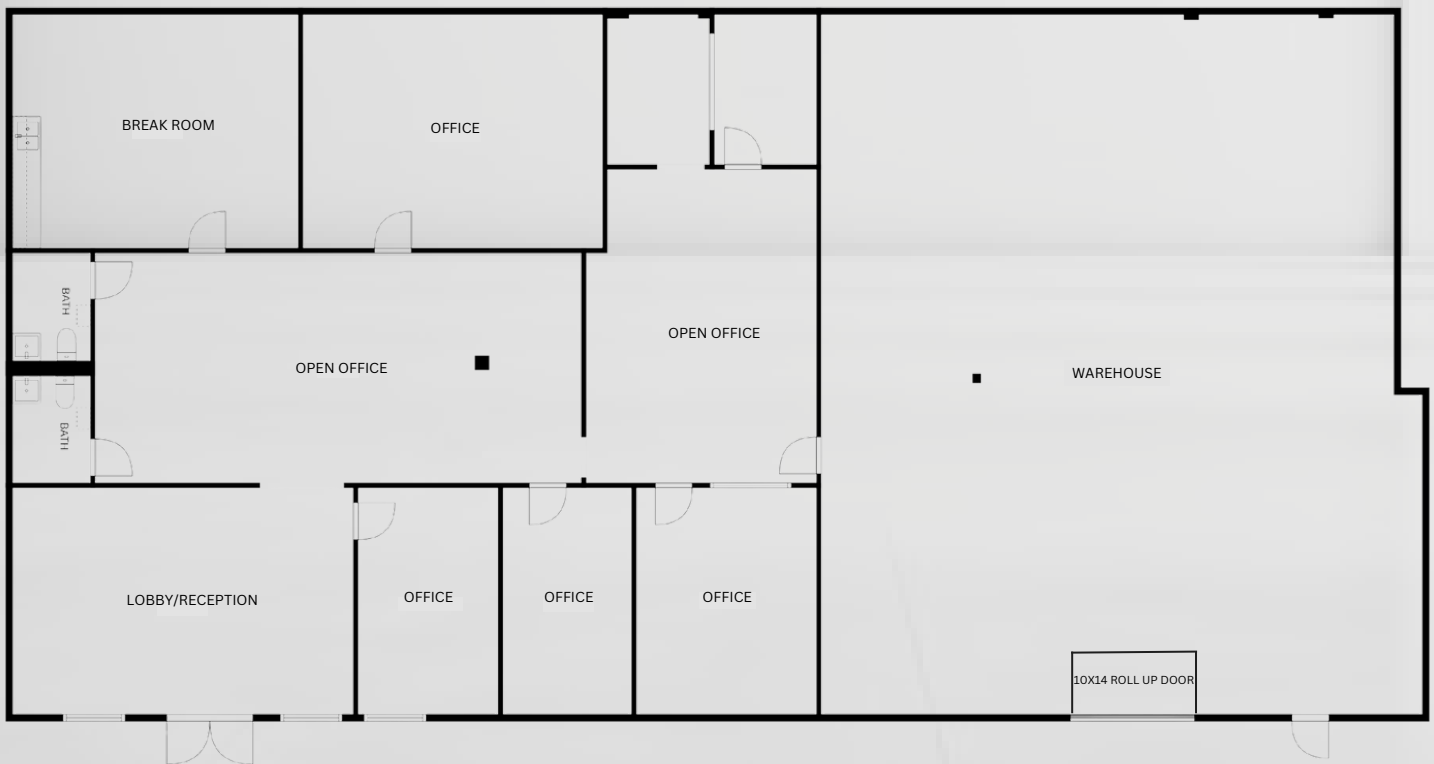
Please contact agents for information regarding potential TI allowance.



4892 S COMMERCE DR, MURRAY, UT (UNIT 8)



UNIT 8 FLOOR PLAN



WAREHOUSE	2,200 SF
OFFICE	2,800 SF
TOTAL	5,000 SF


SITE LOCATION



OUR Contact


Get in touch with Us!


Blake McDougal

 +1 801-898-5411


 bmcDougal@presidio-commercial.com

Dalton Savage

 +1 801-669-6488

 dalton@presidio-commercial.com

 www.presidioteam.com

 2100 W Pleasant Grove Blvd #160,
Pleasant Grove, UT 84062